

**DIFUSION**  
**HIORAUICA**  s.a.

Polígono Indus. Vilamalla  
c/ Garbí, 21-23  
17469 VILAMALLA Tels. (972) 52.50.12  
(Girona) - España Fax (972) 52.54.77

BUDGET  ORDER

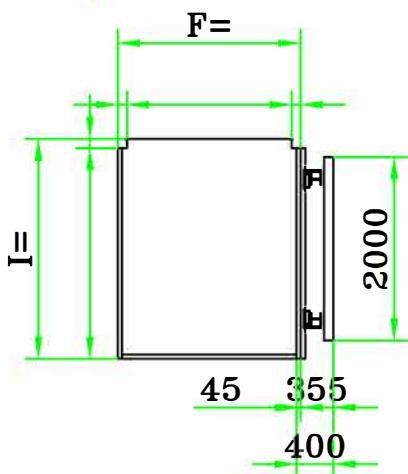
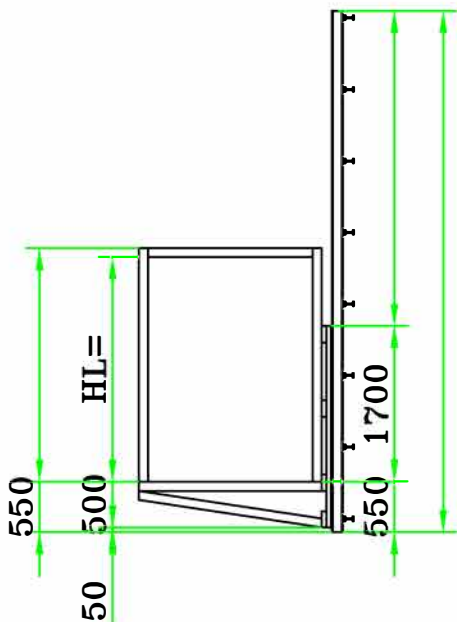
Nº DATE

COSTUMER

FAO:

Ref.

**PLATFORM LIFT FOR GOODS AND PEOPLE 2500 Kg DHX MODEL**



**GENERAL FEATURES:**

- CHARGE: 2500 Kg  
TRAVEL: \_\_\_\_\_ mm  
Nº STOPS: \_\_\_\_\_  
MAX. SPEED: 0.15 m/s --- POWER 7.5 HP III 380V  
CAR EXTERNAL DIMEN.: (F) \_\_\_\_\_ x (I) \_\_\_\_\_  
CAR EXTERNAL HEIGHT: \_\_\_\_\_  
CAR CLEAR OPENING: WIDTH \_\_\_\_\_ x HEIGHT \_\_\_\_\_  
HYDRAULIC HOSE L= \_\_\_\_\_ m  
PISTON: Ø 100 x \_\_\_\_\_  
POULIES: 3 x Ø280 SC --- CABLES: 3 x Ø14  
OIL:   
ELECTRICAL PRE-WIRING:   
SAFETY EDGES: UND. :   
FIXATIONS: \_\_\_\_\_   
PAWL DEVICES:   
GALVANIZED FLOOR AND CHASIS:

**DECORATION:**

- CEILING WITH LIGHT AND EMERGENCY LIGHT  
INOX:  EPOXY RAL 7032:   
CAR PANELS  
INOX:  EPOXY RAL 7032:   
ANTI-SKIP FLOOR  
INOX:  EPOXY RAL 7016:   
METALIC PROFILES (PLYNTHS, LINTELS, ...)  
INOX:  EPOXY RAL 7032:

**DOORS:**

- MANUAL SWING DOORS 2 LEAVES:  QUANTITY \_\_\_\_\_ CLEAR OPENING \_\_\_\_\_ x \_\_\_\_\_ RIGHT:  LEFT  (LOCK SIDE)  
OTHERS: \_\_\_\_\_

- RETIRING CAM (190V):  \_\_\_\_\_ L.O.P FOR LANDING DOORS:  \_\_\_\_\_  
ELECTRICAL LOCKS:  \_\_\_\_\_

Obs. \_\_\_\_\_

**Validity of the offer: 1 month**

**PRICE Euros TRANSPORT**

Customer's email

Signature

Customer acceptance date